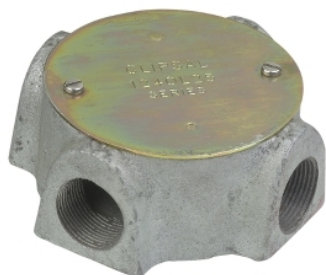


Product data sheet

Characteristics

1240/25/4

BOX JUNCT GALV L/D 25MM 4WAY



Main

Product brand	Clipsal
Range of product	Saturn Series

Complementary

Material	Cast iron
Depth	40 mm
Shape	Round
Surface treatment	Galvanised

Packing Units

Unit Type of Package 1	PCE
Number of Units in Package 1	1
Package 1 Weight	748.0 g
Package 1 Height	4 cm
Package 1 width	9.5 cm
Package 1 Length	9.5 cm
Unit Type of Package 2	BB1
Number of Units in Package 2	10
Package 2 Weight	7.48 kg
Package 2 Height	106 mm
Package 2 width	180 mm
Package 2 Length	257 mm
Unit Type of Package 3	CAR
Number of Units in Package 3	20
Package 3 Weight	14.96 kg
Package 3 Height	226 mm
Package 3 width	191 mm
Package 3 Length	359 mm

The information provided in this documentation contains general descriptions and/or technical characteristics of the performance of the products contained herein. This documentation is not intended as a substitute for and is not to be used for determining suitability or reliability of these products for specific user applications. It is the duty of any such user or integrator to perform the appropriate and complete risk analysis, evaluation and testing of the products with respect to the relevant specific application or use thereof. Neither Schneider Electric Industries SAS nor any of its affiliates or subsidiaries shall be responsible or liable for misuse of the information contained herein.

Offer Sustainability

Sustainable offer status	Green Premium product
REACH Regulation	REACH Declaration
REACH free of SVHC	Yes
EU RoHS Directive	Pro-active compliance (Product out of EU RoHS legal scope) EU RoHS Declaration
Toxic heavy metal free	Yes
Mercury free	Yes
RoHS exemption information	Yes
China RoHS Regulation	China RoHS Declaration
Environmental Disclosure	Product Environmental Profile