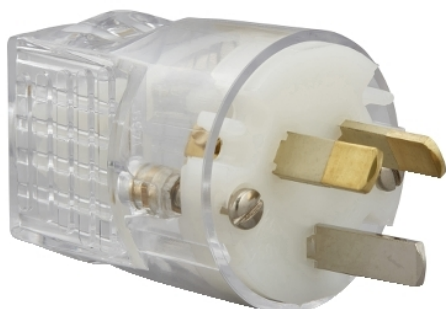


## Product data sheet

### Characteristics

# 1439S-TR

## 1439S 250V 10A 3PIN PLUG -INSU



### Main

Range of product	Standard Series
Product brand	Clipsal

### Complementary

[In] rated current	10 A
[Ue] rated operational voltage	230 V 50/60 Hz conforming to EN 60309-2
Colour	Body: transparent
Material	Plastic
Connections - terminals	Screw terminal
Plug, socket, control station shape	Straight
Duration	6 h

### Packing Units

Unit Type of Package 1	PCE
Number of Units in Package 1	1
Package 1 Weight	44 g
Package 1 Height	40 mm
Package 1 width	100 mm
Package 1 Length	160 mm
Unit Type of Package 2	BB1
Number of Units in Package 2	10
Package 2 Weight	0.506 kg
Package 2 Height	90 mm
Package 2 width	130 mm
Package 2 Length	176 mm
Unit Type of Package 3	CAR
Number of Units in Package 3	200
Package 3 Weight	11.6 kg
Package 3 Height	254 mm
Package 3 width	348 mm
Package 3 Length	445 mm

The information provided in this documentation contains general descriptions and/or technical characteristics of the performance of the products contained herein. This documentation is not intended as a substitute for and is not to be used for determining suitability or reliability of these products for specific user applications. It is the duty of any such user or integrator to perform the appropriate and complete risk analysis, evaluation and testing of the products with respect to the relevant specific application or use thereof. Neither Schneider Electric Industries SAS nor any of its affiliates or subsidiaries shall be responsible or liable for misuse of the information contained herein.

## Offer Sustainability

Sustainable offer status	Green Premium product
REACH Regulation	<a href="#">REACH Declaration</a>
EU RoHS Directive	Compliant <a href="#">EU RoHS Declaration</a>
Mercury free	Yes
RoHS exemption information	<a href="#">Yes</a>
China RoHS Regulation	<a href="#">China RoHS Declaration</a>
Environmental Disclosure	<a href="#">Product Environmental Profile</a>