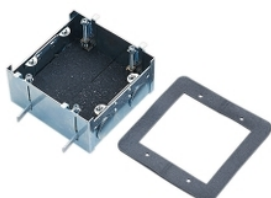


Product data sheet

Characteristics

157/2F

BOX WALL 2 GANG FIRE RATED



Main

Range of product	Series 157
Product brand	Clipsal

Complementary

Shape	Square
Number of gangs	2 gangs
Cable entry number	10
Material	Steel
Surface treatment	Electro-galvanized
Length	97 mm
Depth	47 mm
Location of connection	Rear

Packing Units

Unit Type of Package 1	PCE
Number of Units in Package 1	1
Package 1 Height	5 cm
Package 1 Width	9.5 cm
Package 1 Length	10 cm
Package 1 Weight	0.356 kg

Offer Sustainability

Sustainable offer status	Green Premium product
REACH Regulation	REACH Declaration
REACH free of SVHC	Yes
EU RoHS Directive	Pro-active compliance (Product out of EU RoHS legal scope) EU RoHS Declaration
Toxic heavy metal free	Yes
Mercury free	Yes
RoHS exemption information	Yes
China RoHS Regulation	China RoHS Declaration
Environmental Disclosure	Product Environmental Profile