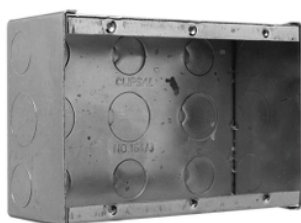


## Product data sheet

### Characteristics

# 164/3

## Clipsal - Mounting Accessories, Wall Boxes Metal, Poured Concrete, Single Height, 3 Gang



### Main

Range of product	Series 164
Product brand	Clipsal

### Complementary

Shape	Rectangular
Number of gangs	3 gangs
Cable entry number	21
Material	Steel
Surface treatment	Electro-galvanized
Length	97 mm
Width	142 mm
Depth	58 mm
Location of connection	Rear

### Packing Units

Unit Type of Package 1	PCE
Number of Units in Package 1	1
Package 1 Height	6 cm
Package 1 Width	10 cm
Package 1 Length	14 cm
Package 1 Weight	0.408 kg

### Offer Sustainability

REACH Regulation	<a href="#">REACH Declaration</a>
REACH free of SVHC	Yes
EU RoHS Directive	Pro-active compliance (Product out of EU RoHS legal scope) <a href="#">EU RoHS Declaration</a>
Toxic heavy metal free	Yes
Mercury free	Yes
China RoHS Regulation	<a href="#">China RoHS Declaration</a>
RoHS exemption information	<a href="#">Yes</a>
Circularity Profile	No need of specific recycling operations