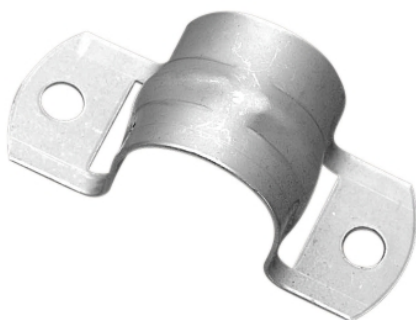


## Product data sheet

### Characteristics

# 170SS

Modena/Strato, Saddle Conduit Stainless Steel, 12MM



### Main

Product brand	Clipsal
Range of product	Series 170SS

### Complementary

Diameter	12 mm
Fixing mode	By screws
Material	Stainless steel

### Packing Units

Unit Type of Package 1	PCE
Number of Units in Package 1	1
Package 1 Weight	3.600 g

### Offer Sustainability

REACH Regulation	 <a href="#">REACH Declaration</a>
REACH free of SVHC	Yes
EU RoHS Directive	Pro-active compliance (Product out of EU RoHS legal scope)  <a href="#">EU RoHS Declaration</a>
Toxic heavy metal free	Yes
Mercury free	Yes
China RoHS Regulation	 <a href="#">China RoHS Declaration</a>
RoHS exemption information	 <a href="#">Yes</a>