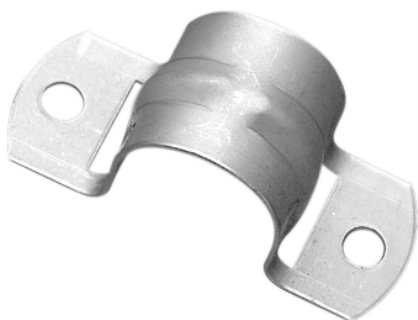


Product data sheet

Characteristics

171SS

Clipsal - Cable Management, Metal, Stainless Steel Saddles, 16mm



Main

| | |
|------------------|--------------|
| Product brand | Clipsal |
| Range of product | Series 170SS |

Complementary

| | |
|-------------|-----------------|
| Diameter | 16 mm |
| Fixing mode | By screws |
| Material | Stainless steel |

Packing Units

| | |
|------------------------------|--------|
| Unit Type of Package 1 | PCE |
| Number of Units in Package 1 | 1 |
| Package 1 Height | 2.0 cm |
| Package 1 Width | 2.5 cm |
| Package 1 Length | 4.6 cm |
| Package 1 Weight | 8.0 g |

Offer Sustainability

| | |
|----------------------------|--|
| REACH Regulation | REACH Declaration |
| REACH free of SVHC | Yes |
| EU RoHS Directive | Pro-active compliance (Product out of EU RoHS legal scope) EU RoHS Declaration |
| Toxic heavy metal free | Yes |
| Mercury free | Yes |
| China RoHS Regulation | China RoHS Declaration |
| RoHS exemption information | Yes |

The information provided in this documentation contains general descriptions and/or technical characteristics of the performance of the products contained herein. This documentation is not intended as a substitute for and is not to be used for determining suitability or reliability of these products for specific user applications. It is the duty of any such user or integrator to perform the appropriate and complete risk analysis, evaluation and testing of the products with respect to the relevant specific application or use thereof. Neither Schneider Electric Industries SAS nor any of its affiliates or subsidiaries shall be responsible or liable for misuse of the information contained herein.