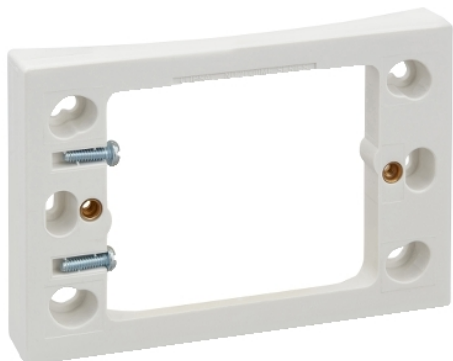


## Product data sheet

### Characteristics

# 2000MF400-WE

## 2000 Series, Mounting Flange Horizontal Mount, for 400mm Diameter Surface



### Main

Range of product	Series 2000
Product brand	Clipsal
Product or component type	Flange mounting kit
Colour	White electric

### Complementary

Colour code	WE
Shape	Rectangular
Fixing center	84 mm
Depth	18 mm
Length	119 mm
Width	78 mm

### Packing Units

Unit Type of Package 1	PCE
Number of Units in Package 1	1
Package 1 Height	1.7 cm
Package 1 Width	7.9 cm
Package 1 Length	11.9 cm
Package 1 Weight	44.7 g
Unit Type of Package 2	BB1
Number of Units in Package 2	10
Package 2 Height	11.4 cm
Package 2 Width	14.4 cm
Package 2 Length	16.4 cm
Package 2 Weight	518 g
Unit Type of Package 3	CAR
Number of Units in Package 3	200
Package 3 Height	38 cm
Package 3 Width	35.5 cm
Package 3 Length	46 cm
Package 3 Weight	12 kg

The information provided in this documentation contains general descriptions and/or technical characteristics of the performance of the products contained herein. This documentation is not intended as a substitute for and is not to be used for determining suitability or reliability of these products for specific user applications. It is the duty of any such user or integrator to perform the appropriate and complete risk analysis, evaluation and testing of the products with respect to the relevant specific application or use thereof. Neither Schneider Electric Industries SAS nor any of its affiliates or subsidiaries shall be responsible or liable for misuse of the information contained herein.

## Offer Sustainability

REACH Regulation	<a href="#">REACH Declaration</a>
REACH free of SVHC	Yes
EU RoHS Directive	Pro-active compliance (Product out of EU RoHS legal scope) <a href="#">EU RoHS Declaration</a>
Toxic heavy metal free	Yes
Mercury free	Yes
China RoHS Regulation	<a href="#">China RoHS Declaration</a>
RoHS exemption information	<a href="#">Yes</a>