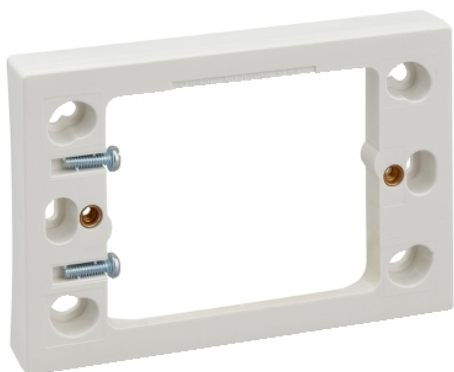


Product data sheet

Characteristics

2000MFV300-WE

FLANGE MTG CURVED SURFACE



Main

Range of product	Series 2000
Product brand	Clipsal
Product or component type	Flange mounting kit
Colour	White electric

Complementary

Colour code	WE
Shape	Rectangular
Fixing center	84 mm
Depth	18 mm
Length	119 mm
Width	78 mm

Packing Units

Unit Type of Package 1	Db
Number of Units in Package 1	1
Package 1 Height	1.8 cm
Package 1 Width	7.8 cm
Package 1 Length	11.9 cm
Package 1 Weight	0.05 kg

Offer Sustainability

Sustainable offer status	Green Premium product
REACH Regulation	REACH Declaration
REACH free of SVHC	Yes
EU RoHS Directive	Pro-active compliance (Product out of EU RoHS legal scope) EU RoHS Declaration
Toxic heavy metal free	Yes
Mercury free	Yes
China RoHS Regulation	China RoHS Declaration
RoHS exemption information	Yes
Environmental Disclosure	Product Environmental Profile