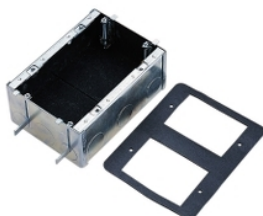


# Product data sheet

## Characteristics

# 2157/2F

## BOX WALL 2 GANG FIRE RATED



### Main

Range of product	Series 2000
Product brand	Clipsal

### Complementary

Shape	Rectangular
Number of gangs	2 gangs
Cable entry number	21
Material	Steel
Surface treatment	Electro-galvanized
Length	97 mm
Depth	58 mm
Location of connection	Rear

### Packing Units

Package 1 Weight	0.590 kg
------------------	----------

### Offer Sustainability

Sustainable offer status	Green Premium product
REACH Regulation	<a href="#">REACH Declaration</a>
EU RoHS Directive	Pro-active compliance (Product out of EU RoHS legal scope) <a href="#">EU RoHS Declaration</a>
Toxic heavy metal free	Yes
Mercury free	Yes
RoHS exemption information	<a href="#">Yes</a>
China RoHS Regulation	<a href="#">China RoHS Declaration</a>
Environmental Disclosure	<a href="#">Product Environmental Profile</a>

The information provided in this documentation contains general descriptions and/or technical characteristics of the performance of the products contained herein. This documentation is not intended as a substitute for and is not to be used for determining suitability or reliability of these products for specific user applications. It is the duty of any such user or integrator to perform the appropriate and complete risk analysis, evaluation and testing of the products with respect to the relevant specific application or use thereof. Neither Schneider Electric Industries SAS nor any of its affiliates or subsidiaries shall be responsible or liable for misuse of the information contained herein.