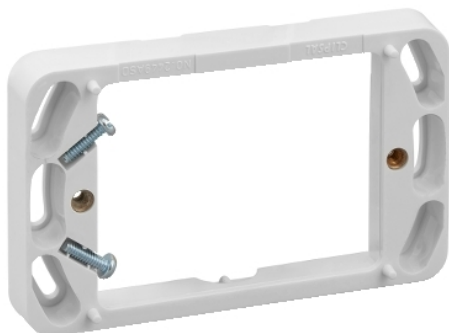


Product data sheet

Characteristics

2449ASD-WE

Clipsal - Mounting Accessories, Mounting spacer to Suit 2000 Series



Main

Product brand	Clipsal
Product or component type	Mounting spacer
Colour	White electric

Complementary

Colour code	WE
Fixing center	84 mm
Depth	14 mm
Length	114 mm
Width	68 mm

Packing Units

Unit Type of Package 1	PCE
Number of Units in Package 1	1
Package 1 Height	1.8 cm
Package 1 Width	7 cm
Package 1 Length	11.5 cm
Package 1 Weight	33.8 g
Unit Type of Package 2	BB1
Number of Units in Package 2	10
Package 2 Height	11.9 cm
Package 2 Width	8.3 cm
Package 2 Length	17.9 cm
Package 2 Weight	0.42 kg
Unit Type of Package 3	CAR
Number of Units in Package 3	200
Package 3 Height	30.5 cm
Package 3 Width	29.6 cm
Package 3 Length	43.6 cm
Package 3 Weight	8.4 kg

The information provided in this documentation contains general descriptions and/or technical characteristics of the performance of the products contained herein. This documentation is not intended as a substitute for and is not to be used for determining suitability or reliability of these products for specific user applications. It is the duty of any such user or integrator to perform the appropriate and complete risk analysis, evaluation and testing of the products with respect to the relevant specific application or use thereof. Neither Schneider Electric Industries SAS nor any of its affiliates or subsidiaries shall be responsible or liable for misuse of the information contained herein.

Offer Sustainability

Sustainable offer status	Green Premium product
REACH Regulation	REACH Declaration
REACH free of SVHC	Yes
EU RoHS Directive	Pro-active compliance (Product out of EU RoHS legal scope) EU RoHS Declaration
Toxic heavy metal free	Yes
Mercury free	Yes
China RoHS Regulation	China RoHS Declaration
RoHS exemption information	Yes
Environmental Disclosure	Product Environmental Profile