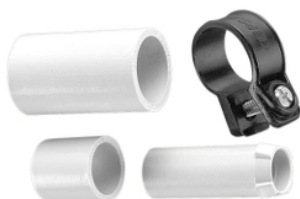


Product data sheet

Characteristics

263F25R-GY

ADAPTOR CONDUIT PLAIN/FLEXIBLE 25MM



Main

Colour	Grey
Product brand	Clipsal

Complementary

Colour code	GY
Material	PVC (polyvinyl chloride)
Product destination	Diameter: 20 mm tube Diameter: 25 mm tube

Environment

Standards	AS/NZS 2053
-----------	-------------

Packing Units

Package 1 Weight	0.035 kg
------------------	----------

Offer Sustainability

Sustainable offer status	Green Premium product
REACH Regulation	REACH Declaration
REACH free of SVHC	Yes
EU RoHS Directive	Pro-active compliance (Product out of EU RoHS legal scope) EU RoHS Declaration
Toxic heavy metal free	Yes
Mercury free	Yes
RoHS exemption information	Yes
China RoHS Regulation	China RoHS Declaration
Environmental Disclosure	Product Environmental Profile

The information provided in this documentation contains general descriptions and/or technical characteristics of the performance of the products contained herein. This documentation is not intended as a substitute for and is not to be used for determining suitability or reliability of these products for specific user applications. It is the duty of any such user or integrator to perform the appropriate and complete risk analysis, evaluation and testing of the products with respect to the relevant specific application or use thereof. Neither Schneider Electric Industries SAS nor any of its affiliates or subsidiaries shall be responsible or liable for misuse of the information contained herein.