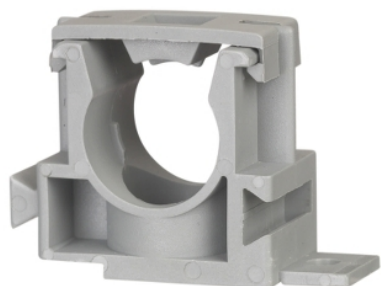


Product data sheet

Characteristics

280C50

BRACKET MOUNTING FOR CONDUIT



Main

| | |
|---------------------------|-------------------|
| Product brand | Clipsal |
| Product or component type | Clamp and bracket |

Complementary

| | |
|----------|--------------------------|
| Material | PVC (polyvinyl chloride) |
|----------|--------------------------|

Packing Units

| | |
|------------------|----------|
| Package 1 Weight | 0.001 kg |
|------------------|----------|

Offer Sustainability

| | |
|----------------------------|--|
| REACH Regulation | REACH Declaration |
| REACH free of SVHC | Yes |
| EU RoHS Directive | Pro-active compliance (Product out of EU RoHS legal scope) EU RoHS Declaration |
| Toxic heavy metal free | Yes |
| Mercury free | Yes |
| RoHS exemption information | Yes |
| China RoHS Regulation | China RoHS Declaration |

The information provided in this documentation contains general descriptions and/or technical characteristics of the products contained herein. This documentation is not intended as a substitute for and is not to be used for determining suitability or reliability of these products for specific user applications. It is the duty of any such user or integrator to perform the appropriate and complete risk analysis, evaluation and testing of the products with respect to the relevant specific application or use thereof. Neither Schneider Electric Industries SAS nor any of its affiliates or subsidiaries shall be responsible or liable for misuse of the information contained herein.