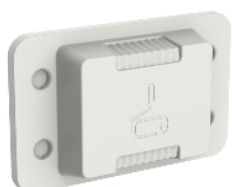


Product data sheet

Characteristics

3000PP/100

Iconic, protective paint cover, for 120 x 78mm plates



Main

Range	Clipsal Iconic
Range of product	Iconic
Product or component type	Protective cover
Surface finish	Painted
Colour tint	Translucent Green

Complementary

Width	115.6 mm
Height	71.4 mm
Depth	22.3 mm

Packing Units

Unit Type of Package 1	PCE
Number of Units in Package 1	1
Package 1 Weight	1 g
Package 1 Height	4 mm
Package 1 width	25 mm
Package 1 Length	67 mm
Unit Type of Package 2	CAR
Number of Units in Package 2	5
Package 2 Weight	1673.2 g
Package 2 Height	335 mm
Package 2 width	261 mm
Package 2 Length	335 mm
Unit Type of Package 3	PAL
Number of Units in Package 3	18000
Package 3 Weight	60235.2 g

Offer Sustainability

EU RoHS Directive	Under investigation
Environmental Disclosure	Product Environmental Profile

The information provided in this documentation contains general descriptions and/or technical characteristics of the performance of the products contained herein. This documentation is not intended as a substitute for and is not to be used for determining suitability or reliability of these products for specific user applications. It is the duty of any such user or integrator to perform the appropriate and complete risk analysis, evaluation and testing of the products with respect to the relevant specific application or use thereof. Neither Schneider Electric Industries SAS nor any of its affiliates or subsidiaries shall be responsible or liable for misuse of the information contained herein.