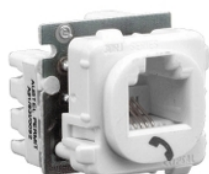


## Product data sheet

### Characteristics

# 30RJ66SMT-WE

## SOCKET MOD 6W/6C MECH TELE



### Main

Colour	White electric
Product brand	Clipsal
Range of product	Actassi
Product or component type	Socket-outlet

### Complementary

Colour code	WE
Number of ways	6 ways
Connector type	110 RJ12
Communication network category	3
Fixing mode	Special tool
AWG gauge	AWG 26...AWG 22

### Packing Units

Unit Type of Package 1	PCE
Number of Units in Package 1	1
Package 1 Weight	8 g
Package 1 Height	31 mm
Package 1 width	27 mm
Package 1 Length	27 mm
Unit Type of Package 2	BB1
Number of Units in Package 2	10
Package 2 Weight	0.108 kg
Package 2 Height	42 mm
Package 2 width	56 mm
Package 2 Length	118 mm
Unit Type of Package 3	CAR
Number of Units in Package 3	350
Package 3 Weight	3.85 kg
Package 3 Height	170 mm
Package 3 width	282 mm
Package 3 Length	300 mm

The information provided in this documentation contains general descriptions and/or technical characteristics of the performance of the products contained herein. This documentation is not intended as a substitute for and is not to be used for determining suitability or reliability of these products for specific user applications. It is the duty of any such user or integrator to perform the appropriate and complete risk analysis, evaluation and testing of the products with respect to the relevant specific application or use thereof. Neither Schneider Electric Industries SAS nor any of its affiliates or subsidiaries shall be responsible or liable for misuse of the information contained herein.

## Offer Sustainability

Sustainable offer status	Green Premium product
REACH Regulation	<a href="#">REACH Declaration</a>
REACH free of SVHC	Yes
EU RoHS Directive	Compliant <a href="#">EU RoHS Declaration</a>
Toxic heavy metal free	Yes
Mercury free	Yes
RoHS exemption information	<a href="#">Yes</a>
China RoHS Regulation	<a href="#">China RoHS Declaration</a>
Environmental Disclosure	<a href="#">Product Environmental Profile</a>