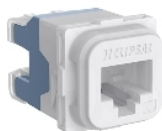


## Product data sheet

### Characteristics

# 40RJ45SMA6-TN

Actassi RJ45 Cat6 Connector Unshielded 40  
Mech - pk x 1



### Main

Range	Actassi
Product type	RJ45 network socket
Device presentation	Two piece design
Colour tint	Stuffer cap: transparent (ABS + PC) IDC cover: blue (ABS + PC) Connector housing: translucent (ABS + PC)
Wiring Colour configuration	568 A/B
Quantity per set	Set of 1

### Complementary

[In] rated current	1.5 A at 25 °C
Voltage proof	1000 V AC/DC peak, between contacts
Contact resistance	20 mOhm
Insulation resistance	Initial insulation resistance: > 500 MOhm at 100 V DC
AWG gauge	AWG 23...AWG 24
Durability	750 cycles
Coupling attenuation	>= 35 dB at 30...100 MHz >= 75 - 20 x log(f) dB at 100...1000 MHz
Contact pins	8 pins of copper alloy and gold plated conforming to IEC 60603-7
Pulling force	50 N during 60 s
Transverse conversion loss	>= 50 dB >= 68 - 20 x log(f) dB at 1...250000 kHz
Tool type	Punch down tool Quick termination tool
Cable outer diameter	0.9...1.1 mm
Compatible LAN cable types	UTP
Communication network category	6
Supported applications	1000BASE-T
Protocols	PoE+ (Power over Ethernet) VoIP (Voice IP)
Product compatibility	RJ45 plug
Transmission frequency	0...250 MHz
Type of footprint	40 mech
Height	22 mm
Length	36 mm
Width	16 mm

The information provided in this documentation contains general descriptions and/or technical characteristics of the performance of the products contained herein. This documentation is not intended as a substitute for and is not to be used for determining suitability or reliability of these products for specific user applications. It is the duty of any such user or integrator to perform the appropriate and complete risk analysis, evaluation and testing of the products with respect to the relevant specific application or use thereof. Neither Schneider Electric Industries SAS nor any of its affiliates or subsidiaries shall be responsible or liable for misuse of the information contained herein.

## Environment

Operational temperature range	-40...70 °C
Climatic category	40/070/21 (21 days)
Product certifications	RCM
Standards	ANSI/TIA-568-C.2 AS/NZS 3080 AS/CA S008 ISO/IEC 11801 IEC 60603-7-4

## Packing Units

Package 1 Weight	0.010 kg
Package 1 Height	20.000 mm
Package 1 width	150.000 mm
Package 1 Length	108.000 mm

## Offer Sustainability

EU RoHS Directive	Not applicable, out of EU RoHS legal scope
-------------------	--

## Contractual warranty

Warranty	18 months
----------	-----------