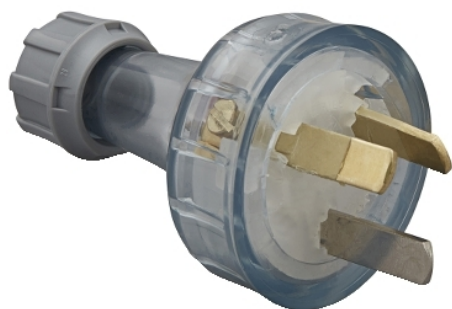


## Product data sheet

### Characteristics

# 439SN-TR

Standard Series, Plug, Flexible, Straight, 3 PIN,  
10A, 250V, Neon, Transparent



#### Main

Range of product	Standard Series
Product brand	Clipsal

#### Complementary

[In] rated current	10 A
[Ue] rated operational voltage	230 V 50/60 Hz conforming to EN 60309-2
Colour	Body: transparent
Material	Plastic
Connections - terminals	Screw terminal
Plug, socket, control station shape	Straight
Duration	6 h

#### Packing Units

Unit Type of Package 1	PCE
Number of Units in Package 1	1
Package 1 Height	4 cm
Package 1 Width	10 cm
Package 1 Length	6.7 cm
Package 1 Weight	38.5 g
Unit Type of Package 2	BB1
Number of Units in Package 2	10
Package 2 Height	108 cm
Package 2 Width	114 cm
Package 2 Length	175 cm
Package 2 Weight	0.438 kg
Unit Type of Package 3	PAL
Number of Units in Package 3	7200
Package 3 Height	118 cm
Package 3 Width	120 cm
Package 3 Length	100 cm
Package 3 Weight	322.216 kg

The information provided in this documentation contains general descriptions and/or technical characteristics of the performance of the products contained herein. This documentation is not intended as a substitute for and is not to be used for determining suitability or reliability of these products for specific user applications. It is the duty of any such user or integrator to perform the appropriate and complete risk analysis, evaluation and testing of the products with respect to the relevant specific application or use thereof. Neither Schneider Electric Industries SAS nor any of its affiliates or subsidiaries shall be responsible or liable for misuse of the information contained herein.

## Offer Sustainability

Sustainable offer status	Green Premium product
REACH Regulation	<a href="#">REACH Declaration</a>
EU RoHS Directive	Compliant <a href="#">EU RoHS Declaration</a>
Mercury free	Yes
China RoHS Regulation	<a href="#">China RoHS Declaration</a>
RoHS exemption information	<a href="#">Yes</a>
Environmental Disclosure	<a href="#">Product Environmental Profile</a>