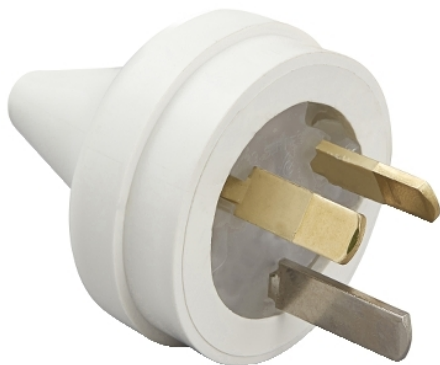


## Product data sheet

### Characteristics

# 439SY-WE

## PG TP 3PN 250V 10A FG8 FL INPN



### Main

Range of product	Standard Series
Product brand	Clipsal

### Complementary

[In] rated current	10 A
[Ue] rated operational voltage	230 V 50/60 Hz conforming to EN 60309-2
Colour	White electric
Material	Plastic
Connections - terminals	Screw terminal
Plug, socket, control station shape	Straight
Duration	6 h

### Packing Units

Package 1 Weight	37.000 g
Package 1 Height	60.000 mm
Package 1 width	100.000 mm
Package 1 Length	170.000 mm

### Offer Sustainability

Sustainable offer status	Green Premium product
REACH Regulation	<a href="#">REACH Declaration</a>
EU RoHS Directive	Compliant <a href="#">EU RoHS Declaration</a>
Mercury free	Yes
RoHS exemption information	<a href="#">Yes</a>
China RoHS Regulation	<a href="#">China RoHS Declaration</a>
Environmental Disclosure	<a href="#">Product Environmental Profile</a>

The information provided in this documentation contains general descriptions and/or technical characteristics of the performance of the products contained herein. This documentation is not intended as a substitute for and is not to be used for determining suitability or reliability of these products for specific user applications. It is the duty of any such user or integrator to perform the appropriate and complete risk analysis, evaluation and testing of the products with respect to the relevant specific application or use thereof. Neither Schneider Electric Industries SAS nor any of its affiliates or subsidiaries shall be responsible or liable for misuse of the information contained herein.