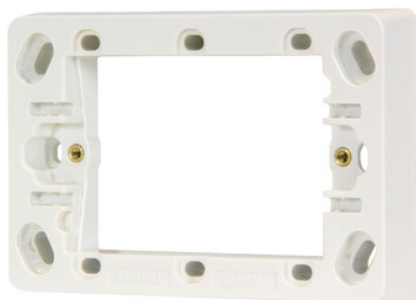


Product data sheet

Characteristics

449BSD-WE

Standard Series, Single Gang Deep Mounting Flange Suits Slimline (16mm Deep)



Main

Range	Clipsal
Product brand	Clipsal



Complementary

Colour code	WE
-------------	----

Packing Units

Unit Type of Package 1	PCE
Number of Units in Package 1	1
Package 1 Height	1.6 cm
Package 1 Width	7.95 cm
Package 1 Length	12.12 cm
Package 1 Weight	42.3 g
Unit Type of Package 2	BB1
Number of Units in Package 2	10
Package 2 Height	8.5 cm
Package 2 Width	12.4 cm
Package 2 Length	17.2 cm
Package 2 Weight	493 g
Unit Type of Package 3	CAR
Number of Units in Package 3	200
Package 3 Height	280 cm
Package 3 Width	355 cm
Package 3 Length	450 cm
Package 3 Weight	10510 g

Offer Sustainability

Sustainable offer status	Green Premium product
RECh Regulation	 RECh Declaration
RECh free of SVHC	Yes
EU RoHS Directive	Compliant  EU RoHS Declaration
Toxic heavy metal free	Yes
Mercury free	Yes

China RoHS Regulation	China RoHS Declaration
RoHS exemption information	Yes
Environmental Disclosure	Product Environmental Profile
Circularity Profile	No need of specific recycling operations