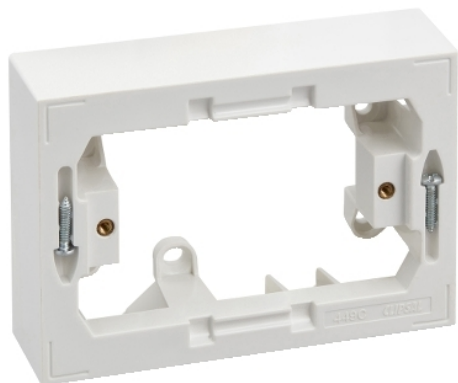


Product data sheet

Characteristics

449C-WE

BLOCK MTG 1 GANG STD PTN MODENA



Main

Colour	White electric
Product brand	Clipsal

Complementary

Colour code	WE
-------------	----

Packing Units

Package 1 Weight	70.000 g
Package 1 Height	34.000 mm
Package 1 width	87.200 mm
Package 1 Length	126.400 mm

Offer Sustainability

REACH free of SVHC	Yes
EU RoHS Directive	Compliant EU RoHS Declaration
Toxic heavy metal free	Yes
Mercury free	Yes
RoHS exemption information	Yes
China RoHS Regulation	China RoHS Declaration

The information provided in this documentation contains general descriptions and/or technical characteristics of the performance of the products contained herein. This documentation is not intended as a substitute for and is not to be used for determining suitability or reliability of these products for specific user applications. It is the duty of any such user or integrator to perform the appropriate and complete risk analysis, evaluation and testing of the products with respect to the relevant specific application or use thereof. Neither Schneider Electric Industries SAS nor any of its affiliates or subsidiaries shall be responsible or liable for misuse of the information contained herein.