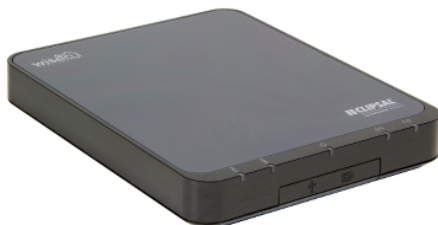


Product data sheet

Characteristics

5200WHC2

Wiser home controller MKII



Main

Range of product	Wiser
Device short name	WHC2
Product or component type	System controller
Supply	DC extension cable

Complementary

Communication network type	C-Bus E-LAN Wireless - 2400 kHz conforming to IEEE 802.11b/g/n
Ethernet service	Dynamic DNS DHCP client
Network security encrypting	WPA2 WEP WPA
Encryption protocol	WEP 64
Connector type	USB HDMI RJ45 Bus
Type of cable	CAT5 category 5e RJ45
Clock drift	1 min/month 1 s/1000 years NTP
[Us] rated supply voltage	Input: 24 V DC, <1 A Communication bus: 15...36 V DC, <0.036 A
Mounting location	Indoor use only
Mounting mode	Free standing
Product compatibility	ZigBee device IP device
Length	219 mm
Width	175 mm
Height	33.5 mm

Environment

Ambient air temperature for operation	0...45 °C
Relative humidity	10...90 % without condensation

Packing Units

Package 1 Weight	1204.000 g
Package 1 Height	78.000 mm
Package 1 width	295.000 mm
Package 1 Length	270.000 mm

Offer Sustainability

Sustainable offer status	Green Premium product
REACH Regulation	REACH Declaration
REACH free of SVHC	Yes
EU RoHS Directive	Compliant EU RoHS Declaration
Mercury free	Yes
RoHS exemption information	Yes
China RoHS Regulation	China RoHS Declaration
Environmental Disclosure	Product Environmental Profile
Circularity Profile	End Of Life Information