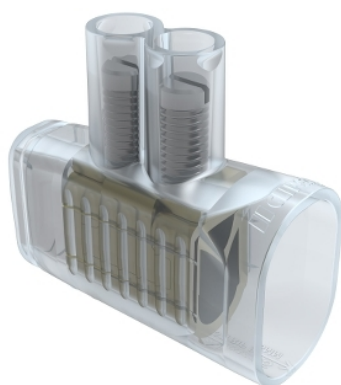


## Product data sheet

### Characteristics

## 563K35

Clipsal - 500 Series, Cable Connectors, Two Screw, Clear Insulated, 80A, Suits up to 2 x 35mm<sup>2</sup> Cables



### Main

Colour	Housing: transparent
Product brand	Clipsal
Provided equipment	2 x screw

### Complementary

Rated voltage	415...500 V AC
Cable cross section	25...35 mm <sup>2</sup> solid or flexible 2 without cable end sleeve
Connector type	Screw terminals
Contacts material	Brass
Material	PP (polypropylene): housing Zinc plated steel: screw

### Packing Units

Unit Type of Package 1	PCE
Number of Units in Package 1	1
Package 1 Height	5.3 cm
Package 1 Width	2.3 cm
Package 1 Length	5.8 cm
Package 1 Weight	64 g

### Offer Sustainability

Sustainable offer status	Green Premium product
REACH Regulation	 <a href="#">REACH Declaration</a>
EU RoHS Directive	Compliant with Exemptions
Mercury free	Yes
China RoHS Regulation	 <a href="#">China RoHS Declaration</a>
RoHS exemption information	 <a href="#">Yes</a>
Environmental Disclosure	 <a href="#">Product Environmental Profile</a>
Circularity Profile	No need of specific recycling operations