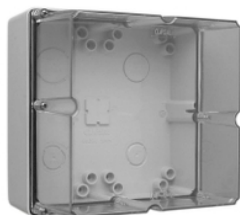


Product data sheet

Characteristics

56DB4-EO

56 Series Adaptable Enclosure - 4 Gang - Electric Orange



Main

Range of product	Series 56
Range	Clipsal - 56 Series
Product brand	Clipsal
Colour	Orange (RAL 2004) Transparent
Cover type	Transparent

Complementary

Number of gangs	4 gangs
Shape	Rectangular
Device mounting	Surface
Mounting mode	Wall-mounted
Material	PVC (polyvinyl chloride): housing
Fixing mode	By screws
Number of mounting holes	16
Length	198 mm
Width	198 mm
Depth	140 mm
Height	198 mm
Net weight	1.42 kg
IP degree of protection	IP66 conforming to AS 60529
Standards	AS 3100

Environment

Ambient air temperature for operation	-25...75 °C
---------------------------------------	-------------

Packing Units

Unit Type of Package 1	PCE
Number of Units in Package 1	1
Package 1 Weight	1.42 kg
Package 1 Height	19.8 cm
Package 1 width	19.8 cm
Package 1 Length	14 cm

The information provided in this documentation contains general descriptions and/or technical characteristics of the performance of the products contained herein. This documentation is not intended as a substitute for and is not to be used for determining suitability or reliability of these products for specific user applications. It is the duty of any such user or integrator to perform the appropriate and complete risk analysis, evaluation and testing of the products with respect to the relevant specific application or use thereof. Neither Schneider Electric Industries SAS nor any of its affiliates or subsidiaries shall be responsible or liable for misuse of the information contained herein.

Offer Sustainability

Sustainable offer status	Green Premium product
REACH Regulation	REACH Declaration
EU RoHS Directive	Compliant EU RoHS Declaration
Mercury free	Yes
RoHS exemption information	Yes
China RoHS Regulation	China RoHS Declaration
Environmental Disclosure	Product Environmental Profile