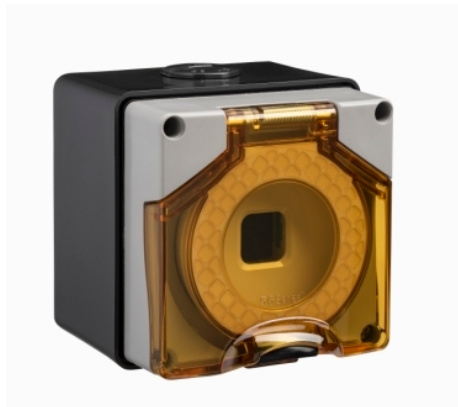


Product data sheet

Characteristics

56M41-CG

56 Series - 40 Module adaptor - 1 aperture - chemical grey



Main

| | |
|---------------------------|---------------------|
| Range of product | Series 56 |
| Range | Clipsal - 56 Series |
| Product brand | Clipsal |
| Product or component type | Enclosure |
| Plug, socket category | Low voltage |
| Outlet standard | Industrial |
| Colour | Grey (RAL 7035) |

Complementary

| | |
|-------------------------|--|
| Number of gangs | 1 gang |
| Shape | Square |
| Device mounting | Surface |
| Cable entry number | 3 |
| Material | ABS (acrylonitrile butadiene-styrene): cover |
| Fixing mode | By screws |
| Tightening torque | 0.8 N.m |
| Cable entry | 3 entries of 25 mm diameter |
| Length | 107 mm |
| Width | 101 mm |
| Depth | 77 mm |
| Height | 107 mm |
| Net weight | 0.5 kg |
| IP degree of protection | IP66 |
| Targeted country | Australia |

Environment

| | |
|---------------------------------------|-------------|
| Ambient air temperature for operation | -25...75 °C |
|---------------------------------------|-------------|

Packing Units

| | |
|------------------------------|----------|
| Unit Type of Package 1 | PCE |
| Number of Units in Package 1 | 1 |
| Package 1 Height | 11.28 cm |
| Package 1 Width | 10.35 cm |
| Package 1 Length | 10.65 cm |
| Package 1 Weight | 0.5 kg |