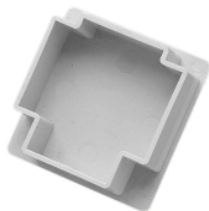


## Product data sheet

### Characteristics

# 900/75/50P-GY

## Clipsal - Cable Management, Maxi Duct Fittings, End Plugs - Grey, 75 x 50mm



### Main

Colour	Grey
Product brand	Clipsal

### Complementary

Colour code	GY
Height	50 mm
Width	50 mm
Material	PVC (polyvinyl chloride)

### Packing Units

Unit Type of Package 1	PCE
Number of Units in Package 1	1
Package 1 Height	15 cm
Package 1 Width	50 cm
Package 1 Length	75 cm
Package 1 Weight	0.034 kg
Unit Type of Package 2	BB1
Number of Units in Package 2	5
Package 2 Height	70 cm
Package 2 Width	85 cm
Package 2 Length	110 cm
Package 2 Weight	0.17 kg
Unit Type of Package 3	CAR
Number of Units in Package 3	125
Package 3 Height	260 cm
Package 3 Width	218 cm
Package 3 Length	345 cm
Package 3 Weight	4.25 kg

The information provided in this documentation contains general descriptions and/or technical characteristics of the performance of the products contained herein. This documentation is not intended as a substitute for and is not to be used for determining suitability or reliability of these products for specific user applications. It is the duty of any such user or integrator to perform the appropriate and complete risk analysis, evaluation and testing of the products with respect to the relevant specific application or use thereof. Neither Schneider Electric Industries SAS nor any of its affiliates or subsidiaries shall be responsible or liable for misuse of the information contained herein.

## Offer Sustainability

Sustainable offer status	Green Premium product
REACH Regulation	<a href="#">REACH Declaration</a>
REACH free of SVHC	Yes
EU RoHS Directive	Pro-active compliance (Product out of EU RoHS legal scope) <a href="#">EU RoHS Declaration</a>
Toxic heavy metal free	Yes
Mercury free	Yes
China RoHS Regulation	<a href="#">China RoHS Declaration</a>
RoHS exemption information	<a href="#">Yes</a>
Circularity Profile	No need of specific recycling operations