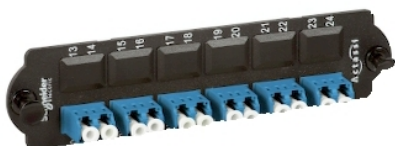


Product data sheet

Characteristics

ACTFM1UF2LC6PSM

Actassi Fibre Optic Front Adapters Plate with 6 x LC Dplx SM Adapters



Main

Range	Actassi
Product	Cover plate with adapters
Product destination	Fibre optic panel
Provided equipment	6 duplex single-mode adaptor for LC

Complementary

Material	PC
Fixing mode	Snap-in
Colour	Black
Width	120 mm
Height	35 mm
Depth	5.6 mm

Packing Units

Package 1 Weight	32.600 g
Package 1 Height	15.000 cm
Package 1 width	4.700 cm
Package 1 Length	4.700 cm

Offer Sustainability

EU RoHS Directive	Pro-active compliance (Product out of EU RoHS legal scope)  EU RoHS Declaration
-------------------	--

The information provided in this documentation contains general descriptions and/or technical characteristics of the performance of the products contained herein. This documentation is not intended as a substitute for and is not to be used for determining suitability or reliability of these products for specific user applications. It is the duty of any such user or integrator to perform the appropriate and complete risk analysis, evaluation and testing of the products with respect to the relevant specific application or use thereof. Neither Schneider Electric Industries SAS nor any of its affiliates or subsidiaries shall be responsible or liable for misuse of the information contained herein.