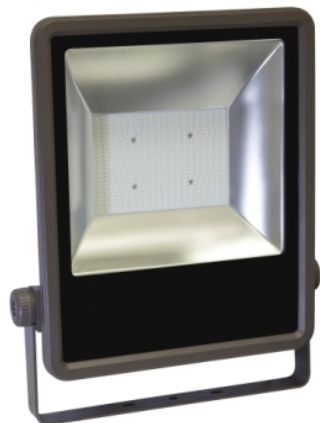


Product data sheet

Characteristics

CLITPFLH200LED

Clipsal - Lighting, Floodlight LED, 200W, 6500K, 20,000lm, IP65



Main

Range	Clipsal
Product or component type	Floodlight
Device application	Lighting

Complementary

Type of installation	Outdoor
Device mounting	Surface
Total system power	200 W
Light source	LED
[Ue] rated operational voltage	240 V AC 50 Hz
Luminous flux	20000 lm
Colour rendering index	R _a =70
Bulb lifespan	30000 h
Colour temperature	6500 K
Beam angle	100 °
Electrical insulation class	Class I
Height	Body with trunion arm: 575 mm
Width	475 mm
Depth	125 mm
Net weight	11.5 kg

Environment

IP degree of protection	IP65
Ambient air temperature for operation	-10...45 °C
Relative humidity	10...95 % non-condensing

Packing Units

Unit Type of Package 1	PCE
Number of Units in Package 1	1
Package 1 Height	58.0 cm
Package 1 Width	12.5 cm
Package 1 Length	47.5 cm
Package 1 Weight	11.5 kg

Contractual warranty

Warranty	3-Years
----------	---------