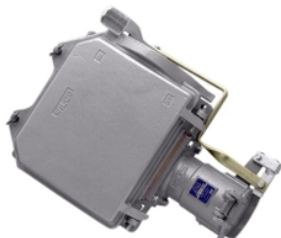


## Product data sheet

### Characteristics

# E563CF

Switched Socket Outlet, E Range, 500V, 63A,  
5 Round PIN, with Fuse



### Main

Range of product	E Wilco
Product brand	Clipsal
Device application	Power supply

### Complementary

Number of poles	5
Number of power socket outlets	1 protective cover
[In] rated current	63 A
[Ue] rated operational voltage	500 V AC

### Packing Units

Unit Type of Package 1	Db
Number of Units in Package 1	1
Package 1 Weight	0.001 kg

The information provided in this documentation contains general descriptions and/or technical characteristics of the performance of the products contained herein. This documentation is not intended as a substitute for and is not to be used for determining suitability or reliability of these products for specific user applications. It is the duty of any such user or integrator to perform the appropriate and complete risk analysis, evaluation and testing of the products with respect to the relevant specific application or use thereof. Neither Schneider Electric Industries SAS nor any of its affiliates or subsidiaries shall be responsible or liable for misuse of the information contained herein.