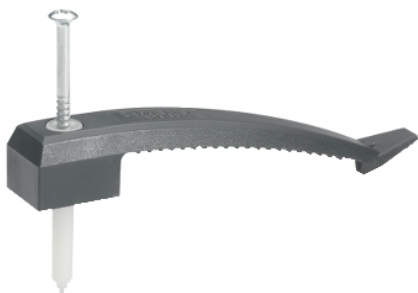


Product data sheet

Characteristics

IMT39078

Thorsman installation material, single cable wing, with nail plug, dark grey- set of 25



Main

Range of product	Thorsman
Product or component type	Single cable wing
Provided equipment	With nail plug
Device application	Cable installation one side
Colour tint	Dark grey
Quantity per set	Set of 25

Complementary

Type of installation	Indoor/outdoor
Number of cables	6 x 0...12 mm: one side
Practical load capacity	30 N
Material	Cable wing: PA (polyamide) Nail plug: PA (polyamide) Nail: steel electroplated
Height	23 mm
Width	20 mm
Depth	130 mm



Environment

Ambient air temperature for operation	-20...60 °C
Environmental characteristic	Withstand extreme temperature High UV resistance

Packing Units

Unit Type of Package 1	PCE
Number of Units in Package 1	1
Package 1 Height	2.0 cm
Package 1 Width	2.0 cm
Package 1 Length	13.0 cm
Package 1 Weight	19.0 g

Offer Sustainability

Sustainable offer status	Green Premium product
REACH Regulation	 REACH Declaration
REACH free of SVHC	Yes
EU RoHS Directive	Pro-active compliance (Product out of EU RoHS legal scope)  EU RoHS Declaration
Toxic heavy metal free	Yes

Mercury free	Yes
China RoHS Regulation	China RoHS Declaration
RoHS exemption information	Yes
Environmental Disclosure	Product Environmental Profile
Circularity Profile	No need of specific recycling operations

Contractual warranty

Warranty	18 months
----------	-----------