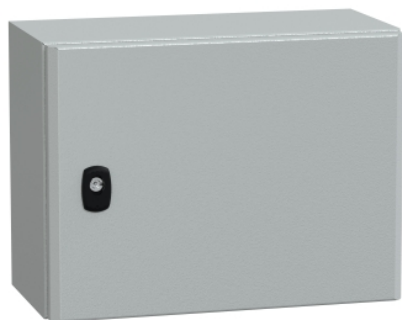


Product data sheet

Characteristics

NSYS3D3420P

Spacial, Wall mounted steel enclosure,
Spacial S3D, plain door, with mounting plate,
300x400x200mm, IP66, IK10



Main

Range	Spacial
Product name	Spacial S3D
Application	Multi-purpose
Category	Compact enclosure
Enclosure nominal height	300 mm
Enclosure nominal width	400 mm
Enclosure nominal depth	200 mm
Door type	Plain
Mounting plate description	Plain
Type of gland plate	Standard
Installation accessory type	Wall-mounting
Device composition	1 body 1 mounting plate 1 door with lock 1 cable gland plate

Complementary

Body type	Single piece body Gutter-shaped front rail double sheet thickness
Number of doors	Front face: 1 door(s)
Door opening side	Reversible (120 °)
Lock type	3 mm double-bar lock
Accessibility for operation	Front
Removable parts	Door by hinges Cable gland plate by screws Mounting plate by fixing element
Material	Enclosure: steel Mounting plate: galvanised steel
Surface finish	Enclosure: epoxy-polyester powder
Colour	Enclosure: grey (RAL 7035)
Standards	IEC 62208
Product certifications	DNV LR BV UL CUL GL
Net weight	6.8 kg

Environment

NEMA degree of protection	NEMA 4X/13
IK degree of protection	IK10 conforming to IEC 62262
IP degree of protection	IP66 conforming to IEC 60529

Packing Units

Unit Type of Package 1	PCE
Number of Units in Package 1	1
Package 1 Height	25.0 cm
Package 1 Width	32.0 cm
Package 1 Length	41.5 cm
Package 1 Weight	6.854 kg
Unit Type of Package 2	PAM
Number of Units in Package 2	56
Package 2 Height	181.0 cm
Package 2 Width	100.0 cm
Package 2 Length	120.0 cm
Package 2 Weight	400.0 kg

Offer Sustainability

Sustainable offer status	Green Premium product
REACH Regulation	REACH Declaration
REACH free of SVHC	Yes
EU RoHS Directive	Pro-active compliance (Product out of EU RoHS legal scope) EU RoHS Declaration
Mercury free	Yes
China RoHS Regulation	China RoHS Declaration
RoHS exemption information	Yes
Environmental Disclosure	Product Environmental Profile

Contractual warranty

Warranty	18 months
----------	-----------