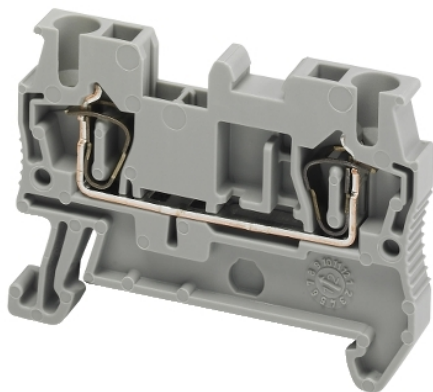


Product data sheet

Characteristics

NSYTRR22

Linery, Terminal block, Linery TR, spring type, feed through, 2 points, 2.5mm², grey



Main

Range	Linery
Product name	Linery TR
Product or component type	Terminal block
Device short name	TRR
Accessory / separate part categor	Connection accessory
Terminal block type	Passthrough
Terminal block level	1
Mounting mode	Clip-on
Nominal cross section	2.5 mm ²
Length	48.5 mm
Colour	Grey
Quantity per set	Set of 50

Complementary

Width	5.2 mm
Height	36.5 mm
Connections - terminals	1 x spring terminal: upstream 1 x spring terminal: downstream
Number of connections	2
Connection position	Top
Number of measurement input	2
Cable cross section	0.08...2.5 Mm ² , flexible without cable end 0.08...4 Mm ² , solid with cable end 0.2...2.5 Mm ² , flexible with cable end 0.08...4 mm ² , solid without cable end
Wire stripping length	10 mm
Tool type	Connection: flat screwdriver Disconnection: flat screwdriver
[Ue] rated operational voltage	600 V CSA 800 V conforming to EN/IEC 60947-7-1 600 V cURus
[In] rated current	20 A CSA 20 A cURus 24 A conforming to EN/IEC 60947-7-1
Material	Polyamide 6/6: insulating case Copper alloy: connector and screw Copper alloy: commoning link Chromium-nickel steel: spring
Dielectric loss	0.01 at 1 MHz conforming to IEC 60250 0.01 at 1 MHz conforming to VDE 0303-T4
Dielectric constant	3.7 at 1 MHz
Resistivity	10000 MΩ.M conforming to IEC 60093 10000 MΩ.m conforming to VDE 0303-T30
Surface resistance	1000 GΩ conforming to IEC 60093 1000 GΩ conforming to VDE 0303-T30
Creep resistance	500 CTI (> 400 kV) conforming to IEC 60093 500 CTI (> 400 kV) conforming to VDE 0303-T30

Flame retardance	V0, thickness 0.8 mm conforming to UL 94
Net weight	5.6 g
Range compatibility	Prisma G Prisma P Prisma PH Prisma Pack Spacial Kaedra Pragma TeSys
Product compatibility	Spacial enclosures

Environment

Product certifications	EAC[RETURN]LR[RETURN]VDE[RETURN]cURus[RETURN]CSA[RETURN]IEC-Ex[RETURN]DNV[RETURN]ATEX[RETURN]GL
Dielectric strength	1000 V conforming to IEC 60243-1
Ambient air temperature for operation	-40...130 °C conforming to IEC 60216-1 -40...130 °C conforming to VDE 0304-T21

Packing Units

Unit Type of Package 1	PCE
Number of Units in Package 1	1
Package 1 Height	0.500 cm
Package 1 Width	3.500 cm
Package 1 Length	4.900 cm
Package 1 Weight	5.600 g
Unit Type of Package 2	BB1
Number of Units in Package 2	50
Package 2 Height	5.000 cm
Package 2 Width	6.800 cm
Package 2 Length	27.200 cm
Package 2 Weight	312.000 g
Unit Type of Package 3	S03
Number of Units in Package 3	1500
Package 3 Height	30.000 cm
Package 3 Width	30.000 cm
Package 3 Length	40.000 cm
Package 3 Weight	9.870 kg

Offer Sustainability

Sustainable offer status	Green Premium product
REACH Regulation	REACH Declaration
REACH free of SVHC	Yes
EU RoHS Directive	Pro-active compliance (Product out of EU RoHS legal scope) EU RoHS Declaration
Toxic heavy metal free	Yes
Mercury free	Yes
China RoHS Regulation	China RoHS Declaration
RoHS exemption information	Yes
Environmental Disclosure	Product Environmental Profile
Circularity Profile	No need of specific recycling operations
Halogen content performance	Halogen free plastic parts product

Contractual warranty

Warranty	18 months
----------	-----------