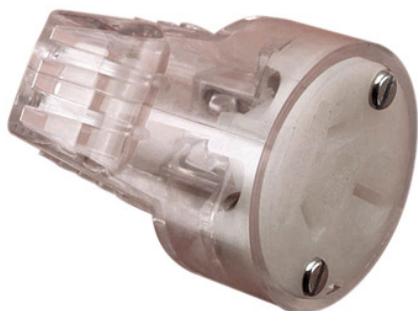


Product data sheet

Characteristics

1438/15-TR

SOCKET CORD EXTENSION 15A 250V



Main

Range of product	Standard Series
Colour	Transparent
Product brand	Clipsal
Quantity per set	Set of 1
Cover type	Complete housing

Complementary

Colour code	TR
Marking	Without marking
Local signalling	Without light indicator
[In] rated current	15 A
[Ue] rated operational voltage	250 V AC
Depth	62 mm
Diameter	41 mm

Environment

Standards	AS/NZS 3112 AS 3100 AS 3109 AS/NZS 3122:approval number S/1
-----------	--

Packing Units

Unit Type of Package 1	PCE
Number of Units in Package 1	1
Package 1 Height	4 cm
Package 1 Width	10 cm
Package 1 Length	17.2 cm
Package 1 Weight	44.2 g

The information provided in this documentation contains general descriptions and/or technical characteristics of the performance of the products contained herein. This documentation is not intended as a substitute for and is not to be used for determining suitability or reliability of these products for specific user applications. It is the duty of any such user or integrator to perform the appropriate and complete risk analysis, evaluation and testing of the products with respect to the relevant specific application or use thereof. Neither Schneider Electric Industries SAS nor any of its affiliates or subsidiaries shall be responsible or liable for misuse of the information contained herein.