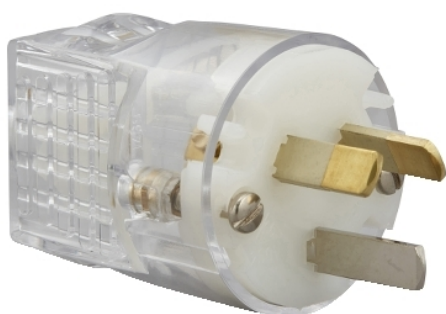


Product data sheet

Characteristics

1439S-TR

Standard Series, Quick Connect Plug, 3 PIN, 10A, 250V, Transparent



Main

Range of product	Standard Series
Product brand	Clipsal

Complementary

[In] rated current	10 A
[Ue] rated operational voltage	230 V 50/60 Hz conforming to EN 60309-2
Colour	Body: transparent
Material	Plastic
Connections - terminals	Screw terminal
Plug, socket, control station shape	Straight
Duration	6 h

Packing Units

Unit Type of Package 1	PCE
Number of Units in Package 1	1
Package 1 Height	4 cm
Package 1 Width	10 cm
Package 1 Length	16 cm
Package 1 Weight	44 g

Offer Sustainability

Sustainable offer status	Green Premium product
REACH Regulation	REACH Declaration
EU RoHS Directive	Compliant with Exemptions
Mercury free	Yes
China RoHS Regulation	China RoHS Declaration
RoHS exemption information	Yes
Environmental Disclosure	Product Environmental Profile
Circularity Profile	No need of specific recycling operations

The information provided in this documentation contains general descriptions and/or technical characteristics of the performance of the products contained herein. This documentation is not intended as a substitute for and is not to be used for determining suitability or reliability of these products for specific user applications. It is the duty of any such user or integrator to perform the appropriate and complete risk analysis, evaluation and testing of the products with respect to the relevant specific application or use thereof. Neither Schneider Electric Industries SAS nor any of its affiliates or subsidiaries shall be responsible or liable for misuse of the information contained herein.