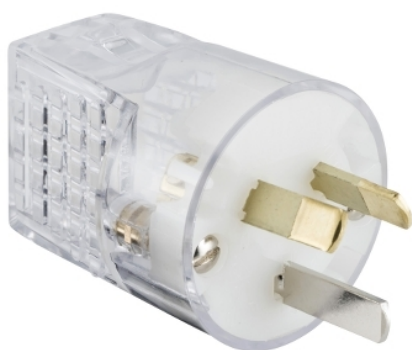


Product data sheet

Characteristics

1439SHD-TR

Standard Series, Quick connect Plug, Straight, 3 PIN, 10A, 250V, Transparent



Main

Range of product	Standard Series
Product brand	Clipsal

Complementary

[In] rated current	10 A
[Ue] rated operational voltage	230 V 50/60 Hz conforming to EN 60309-2
Colour	Body: transparent
Material	Plastic
Connections - terminals	Screw terminal
Plug, socket, control station shape	Straight
Duration	6 h

Packing Units

Unit Type of Package 1	PCE
Number of Units in Package 1	1
Package 1 Height	7.2 cm
Package 1 Width	4.1 cm
Package 1 Length	4.1 cm
Package 1 Weight	44 g

Offer Sustainability

Sustainable offer status	Green Premium product
REACH Regulation	REACH Declaration
EU RoHS Directive	Compliant with Exemptions
Mercury free	Yes
China RoHS Regulation	China RoHS Declaration
RoHS exemption information	Yes
Environmental Disclosure	Product Environmental Profile
Circularity Profile	No need of specific recycling operations