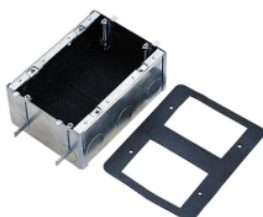


Product data sheet

Characteristics

2157/2F

2000 Series, Wall Box, 2 Gang Suit 1 Hour and 2 Hour Fire Application



Main

Range of product	Series 2000
Product brand	Clipsal

Complementary

Shape	Rectangular
Number of gangs	2 gangs
Cable entry number	21
Material	Steel
Surface treatment	Electro-galvanized
Length	97 mm
Depth	58 mm
Location of connection	Rear

Packing Units

Unit Type of Package 1	PCE
Number of Units in Package 1	1
Package 1 Height	7.5 cm
Package 1 Width	12 cm
Package 1 Length	15.5 cm
Package 1 Weight	0.59 kg

Offer Sustainability

REACH Regulation	REACH Declaration
REACH free of SVHC	Yes
EU RoHS Directive	Pro-active compliance (Product out of EU RoHS legal scope) EU RoHS Declaration
Toxic heavy metal free	Yes
Mercury free	Yes
China RoHS Regulation	China RoHS Declaration
RoHS exemption information	Yes
Circularity Profile	No need of specific recycling operations