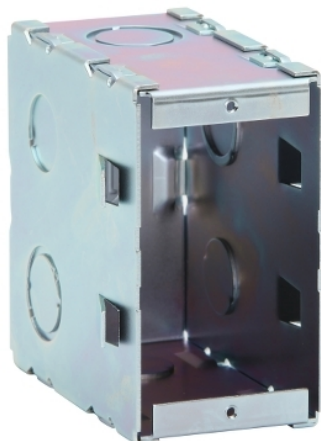


Product data sheet

Characteristics

PDL141C

PDL General Accessories, Flush Box, Concrete
92mm Deep 1-Gang, Galvanised Steel



Main

Range of product	PDL General Accessories
Product or component type	Flush mounting box
Quantity per set	Set of 20
Type of packing	Carton

Complementary

Material	Galvanised steel
Number of gangs	1 gang
Installation direction	Horizontal Vertical
Mounting support	Wall Ceiling
Height	93 Mm internal: 110 mm external:
Width	50 Mm internal: 53 mm external:
Depth	53 Mm external: 92 mm internal:
Fixing center	84 mm
Cable entry	Top Side entry Front entry Bottom entry

Packing Units

Unit Type of Package 1	PCE
Number of Units in Package 1	1
Package 1 Height	9.5 cm
Package 1 Width	5 cm
Package 1 Length	9 cm
Package 1 Weight	345.25 g

Offer Sustainability

REACH Regulation	REACH Declaration
REACH free of SVHC	Yes
EU RoHS Directive	Pro-active compliance (Product out of EU RoHS legal scope) EU RoHS Declaration
Toxic heavy metal free	Yes
Mercury free	Yes

China RoHS Regulation	 China RoHS Declaration
RoHS exemption information	 Yes
Circularity Profile	No need of specific recycling operations