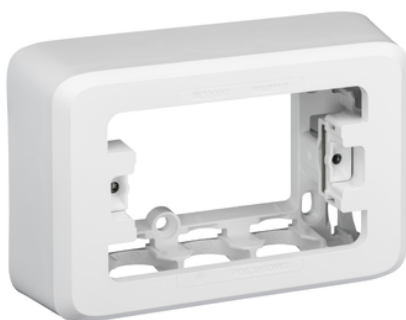


Product data sheet

Characteristics

PDL300DMB-VW

Standard Series, Mounting Block, Deep 40mm 1-Gang, White



Main

Range of product	Iconic
Product or component type	Mounting block
Colour tint	White
Quantity per set	Set of 5
Type of packing	Box

Complementary

Material	HIPS (high impact polystyrene)
Surface finish	Glossy
Installation direction	Horizontal/vertical
Device mounting	Surface
Height	91 mm
Width	140 mm
Depth	40 mm external:
Fixing center	84 mm
Cable entry	12 x 20 mm knock-outs Ø 20 mm 12 x 25 mm knock-outs Ø 25 mm cable entry 12 knock-out cable entries



Environment

Ambient air temperature for operation	-10...40 °C
---------------------------------------	-------------

Packing Units

Unit Type of Package 1	PCE
Number of Units in Package 1	1
Package 1 Height	4.0 cm
Package 1 Width	9.1 cm
Package 1 Length	14.0 cm
Package 1 Weight	82 g

Offer Sustainability

Sustainable offer status	Green Premium product
RECh Regulation	 RECh Declaration
RECh free of SVHC	Yes
EU RoHS Directive	Compliant  EU RoHS Declaration
Toxic heavy metal free	Yes
Mercury free	Yes

China RoHS Regulation	China RoHS Declaration
RoHS exemption information	Yes
Environmental Disclosure	Product Environmental Profile
Circularity Profile	No need of specific recycling operations
