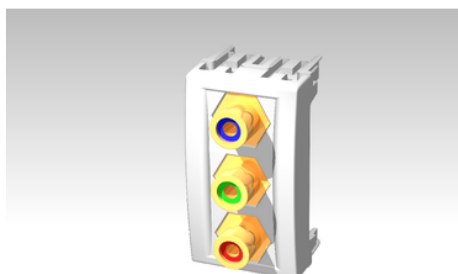


Product data sheet

Characteristics

PDL840MFRGBWH

Modena and Strato 800 Series, RCA Socket Module, Red/Green/Blue Socket



Main

Range of product	Modena 800 Series
Product or component type	Audio/video socket
Connector type	RCA

Complementary

Material	PC (polycarbonate)
Colour tint	White
Surface finish	Matt
Installation direction	Horizontal Vertical
Width	124 mm
Depth	85 mm
Number of gangs	1 gang
Mounting mode	Front
Quantity per set	Set of 10
Type of packing	Carton

Packing Units

Unit Type of Package 1	PCE
Number of Units in Package 1	1
Package 1 Height	2.5 cm
Package 1 Width	2.5 cm
Package 1 Length	4.5 cm
Package 1 Weight	0.031 kg

The information provided in this documentation contains general descriptions and/or technical characteristics of the performance of the products contained herein. This documentation is not intended as a substitute for and is not to be used for determining suitability or reliability of these products for specific user applications. It is the duty of any such user or integrator to perform the appropriate and complete risk analysis, evaluation and testing of the products with respect to the relevant specific application or use thereof. Neither Schneider Electric Industries SAS nor any of its affiliates or subsidiaries shall be responsible or liable for misuse of the information contained herein.