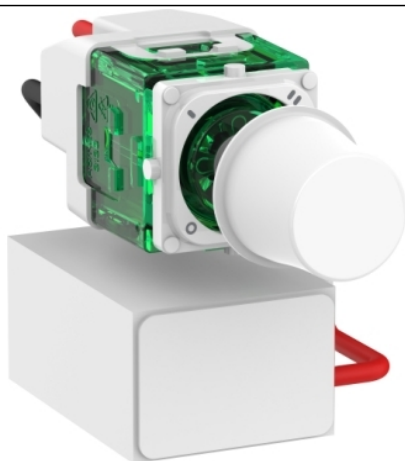


## Product data sheet

### Characteristics

# PDLP40CSFM-XW

## Pro Series, Fan Speed Control Switch, 4-Positions 75VA, White



### Main

|                           |                      |
|---------------------------|----------------------|
| Range                     | Pro Series           |
| Product or component type | Selector switch      |
| Device application        | Fan speed controller |
| Colour tint               | White                |
| Type of packing           | Polybag              |
| Quantity per set          | Set of 10            |

### Complementary

|                                |  |
|--------------------------------|--|
| Device presentation            | Mechanism with central plate   |
| Control type                   | Rotary knob  |
| Switch function                | 4 positions  |
| [Ue] rated operational voltage | 250 V  |
| Material                       | PC (polycarbonate)<br>PA66<br>ABS (acrylonitrile butadiene-styrene)  |
| Fixing mode                    | By clips   |
| Surface finish                 | Glossy   |
| Surface treatment              | Untreated  |
| Connections - terminals        | Screw terminal   |
| Clamping connection capacity   | 1 x 1.5...4 x 1.5 mm <sup>2</sup> for rigid or stranded cable(s)<br>3 x 2.5 mm <sup>2</sup> for stranded cable(s)<br>1 x 4 mm <sup>2</sup> for stranded cable(s) |
| Height                         | 23 mm  |
| Width                          | 23 mm  |
| Depth                          | 33 mm  |
| Net weight                     | 0.016 kg   |

### Environment

|                                       |           |
|---------------------------------------|-----------|
| Ambient air temperature for operation | 0...45 °C |
| Relative humidity                     | 10...95 % |
| Product certifications                | RCM       |

### Packing Units

|                              |         |
|------------------------------|---------|
| Unit Type of Package 1       | PCE     |
| Number of Units in Package 1 | 1       |
| Package 1 Height             | 1.6 cm  |
| Package 1 Width              | 1.9 cm  |
| Package 1 Length             | 3.9 cm  |
| Package 1 Weight             | 16.98 g |

