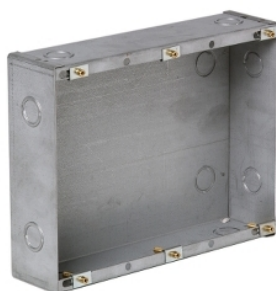


# Product data sheet

## Characteristics

# WB4

## WALL BOX 4 MODULE



### Main

Range of product	Medilec
Product brand	Clipsal




### Complementary

Shape	Rectangular
Device mounting	Flush
Length	198 mm
Width	250 mm
Depth	70 mm

### Packing Units

Package 1 Weight	1.160 kg
------------------	----------

### Offer Sustainability

EU RoHS Directive	Compliant  <a href="#">EU RoHS Declaration</a>
Mercury free	Yes
RoHS exemption information	 Yes
China RoHS Regulation	 <a href="#">China RoHS Declaration</a>

The information provided in this documentation contains general descriptions and/or technical characteristics of the performance of the products contained herein. This documentation is not intended as a substitute for and is not to be used for determining suitability or reliability of these products for specific user applications. It is the duty of any such user or integrator to perform the appropriate and complete risk analysis, evaluation and testing of the products with respect to the relevant specific application or use thereof. Neither Schneider Electric Industries SAS nor any of its affiliates or subsidiaries shall be responsible or liable for misuse of the information contained herein.