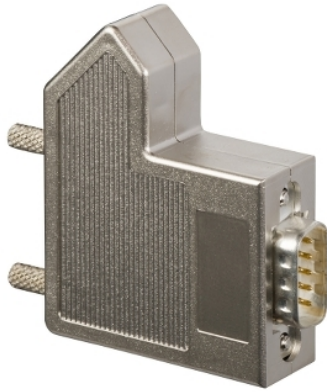


Product data sheet

Characteristics

50964

Kabel za Modbus RS485 - za Masterpact NT/ NW/NW DC/NS630b do 1600



Predstavitev

Serijska izdelka	Masterpact NW DC Masterpact NT Masterpact NW NS630b do 1600
Skupina izdelkov	Masterpact Compact
Izdelek ali sestavni del	RS485 Modbus kabel
Kategorija dodatkov/ ločenih delov	Priključni dodatek
Združljivost serije/ obsega	Masterpact NT Odklopnik Masterpact NW Odklopnik ComPact NS circuit breaker
Kratko ime naprave	RS485 Modbus kabel

Embalažna enota

Tip enote v embalaži 1	PCE
Število enot v embalaži 1	1
Teža embalaže 1	57 g
Višina embalaže 1	2,8 cm
Širina embalaže 1	9 cm
Dolžina embalaže 1	11,6 cm
Teža embalaže 2	4,948 kg

Trajnost ponudbe

Uredba REACH	Izjava REACH
REACH, brez snovi SVHC	Da
Direktiva EU ROHS	Proaktivno zagotavljanje skladnosti (izdelek je zunaj področja uporabe direktive EU RoHS) Izjava EU RoHS
Brez živega srebra	Da
Informacije o izvzetju iz RoHS	Da
Uredba o RoHS za Kitajsko	Izjava O RoHS Za Kitajsko

Pogodbena garancija

Garancija	18 months
-----------	-----------

The information provided in this documentation contains general descriptions and/or technical characteristics of the performance of the products contained herein. This documentation is not intended as a substitute for and is not to be used for determining suitability or reliability of these products for specific user applications. It is the duty of any such user or integrator to perform the appropriate and complete risk analysis, evaluation and testing of the products with respect to the relevant specific application or use thereof. Neither Schneider Electric Industries SAS nor any of its affiliates or subsidiaries shall be responsible or liable for misuse of the information contained herein.