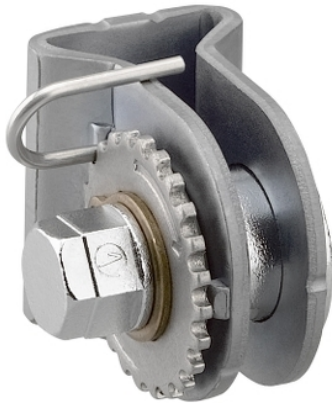


Product data sheet

Characteristics

XY2CZ210

Telemecanique Emergency stop rope pull switches XY2C, tensioner, for XY2CJ



Main

Range of product	Telemecanique Emergency stop rope pull switches XY2C
Accessory / separate part type	Tensioner
Accessory / separate part category	Separate parts

Complementary

Product compatibility	XY2CJ
Accessory / separate part destination	Emergency stop rope pull switch
Net weight	0.051 kg

Packing Units

Unit Type of Package 1	PCE
Number of Units in Package 1	1
Package 1 Height	3 cm
Package 1 Width	3 cm
Package 1 Length	4 cm
Package 1 Weight	53 g
Unit Type of Package 2	S01
Number of Units in Package 2	60
Package 2 Height	15 cm
Package 2 Width	15 cm
Package 2 Length	40 cm
Package 2 Weight	3.405 kg
Unit Type of Package 3	P06
Number of Units in Package 3	1920
Package 3 Height	75 cm
Package 3 Width	60 cm
Package 3 Length	80 cm
Package 3 Weight	123 kg

Offer Sustainability

REACH Regulation	REACH Declaration
EU RoHS Directive	Pro-active compliance (Product out of EU RoHS legal scope) EU RoHS Declaration
Toxic heavy metal free	Yes
Mercury free	Yes
RoHS exemption information	Yes

Dimensions

