



## Main

|                           |  |
|---------------------------|--|
| Product                   | Single Throw Safety Switch   |
| Duty Rating               | Heavy duty   |
| Device Application        | Heavy application  |
| Disconnect Type           | Fusible disconnect   |
| Factory Installed Neutral | Neutral (factory installed)  |
| Phase                     | 3 phase  |
| Number of Poles           | 3  |
| Current Rating            | 100 A  |
| Voltage Rating            | 600 V AC/DC  |
| Enclosure Rating          | NEMA 1 steel   |
| Motor power hp            | 25 Hp at 480 V AC 50-60 Hz for 3 phase motors<br>60 Hp at 480 V AC 50-60 Hz for 3 phase motors<br>30 Hp at 600 V AC 50-60 Hz for 3 phase motors<br>100 Hp at 600 V AC 50-60 Hz for 3 phase motors<br>50 hp at 600 V DC |

## Complementary

|                       |  |
|-----------------------|--|
| Short-circuit current | 10 KA for H or K<br>200 kA for R or J  |
| Fuse type             | H or K<br>R or J   |
| Mounting Type         | Surface  |
| Electrical Connection | Lugs   |
| Wiring configuration  | 4-wire (3PH + N)   |
| Wire Size             | AWG 12...AWG 1/0 aluminium<br>AWG 14...AWG 1/0 copper  |
| Tightening torque     | 50 Lbf.in (5.65 N.m) (AWG 1...AWG 3/0)<br>45 Lbf.in (5.08 N.m) (AWG 6...AWG 4)<br>40 Lbf.in (4.52 N.m) 0.01 in <sup>2</sup> (8.367 mm <sup>2</sup> ) (AWG 8)<br>35 lbf.in (3.95 N.m) 0.00...0.01 in <sup>2</sup> (2.06...5.261 mm <sup>2</sup> ) (AWG 14...AWG 10) |
| Depth                 | 6.38 in (162.05 mm)  |
| Width                 | 10.25 in (260.35 mm)   |
| Height                | 21.25 in (539.75 mm)   |
| Net Weight            | 19.84 lb(US) (9 kg)  |

## Environment

|                |                      |
|----------------|----------------------|
| Certifications | UL listed file E2875 |
|----------------|----------------------|

## Ordering and shipping details

|                   |                               |
|-------------------|-------------------------------|
| Category          | 00008-H&HU SW,2&3P,N1,30-200A |
| Discount Schedule | DE1                           |
| GTIN              | 785901482277                  |
| Returnability     | No                            |
| Country of origin | US                            |

## Packing Units

|                              |                            |
|------------------------------|----------------------------|
| Unit Type of Package 1       | PCE                        |
| Number of Units in Package 1 | 1                          |
| Package 1 Height             | 7.30 in (18.542 cm)        |
| Package 1 Width              | 10.70 in (27.178 cm)       |
| Package 1 Length             | 23.40 in (59.436 cm)       |
| Package 1 Weight             | 19.84 lb(US) (9.0 kg)      |
| Unit Type of Package 2       | PAL                        |
| Number of Units in Package 2 | 40                         |
| Package 2 Height             | 43.50 in (110.49 cm)       |
| Package 2 Width              | 40.00 in (101.6 cm)        |
| Package 2 Length             | 48.00 in (121.92 cm)       |
| Package 2 Weight             | 719.65 lb(US) (326.426 kg) |

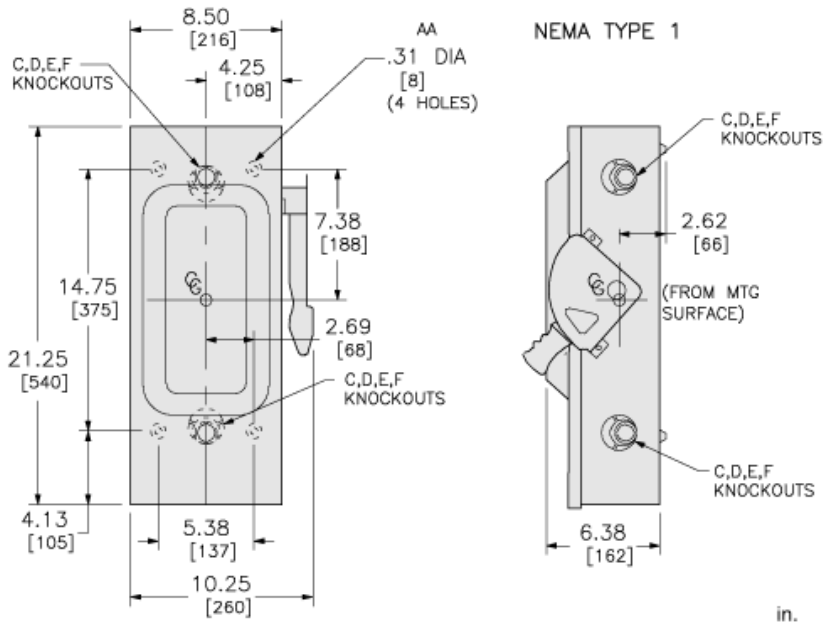
## Offer Sustainability

|                            |   |
|----------------------------|---|
| Sustainable offer status   | Green Premium product   |
| California proposition 65  | WARNING: This product can expose you to chemicals including: Lead and lead compounds, which is known to the State of California to cause cancer and birth defects or other reproductive harm. For more information go to <a href="http://www.P65Warnings.ca.gov">www.P65Warnings.ca.gov</a> |
| REACH Regulation           | <a href="#">REACH Declaration</a>   |
| EU RoHS Directive          | Compliant <a href="#">EU RoHS Declaration</a>   |
| Mercury free               | Yes   |
| China RoHS Regulation      | <a href="#">China RoHS Declaration</a>  |
| RoHS exemption information | <a href="#">Yes</a>   |
| Environmental Disclosure   | <a href="#">Product Environmental Profile</a>   |
| PVC free                   | Yes   |

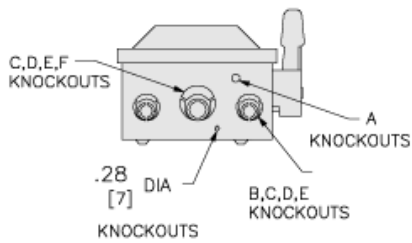
## Contractual warranty

|          |           |
|----------|-----------|
| Warranty | 18 months |
|----------|-----------|

Approximate Dimensions



in.  
[mm]



| KNOCKOUTS |              |    |          |    |
|-----------|--------------|----|----------|----|
| SYMBOL    | CONDUIT SIZE |    | DIAMETER |    |
|           | IN           | MM | IN       | MM |
| A         | .50          | 13 | .88      | 22 |
| B         | .75          | 19 | 1.13     | 29 |
| C         | 1.00         | 25 | 1.38     | 35 |
| D         | 1.25         | 32 | 1.75     | 45 |
| E         | 1.50         | 38 | 2.00     | 51 |
| F         | 2.00         | 51 | 2.50     | 64 |