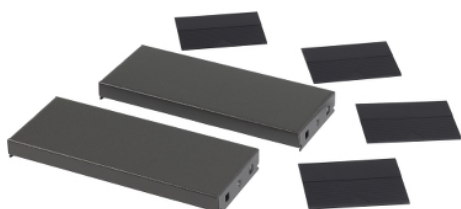


# NSYSPS4100

Side panels for the plinth, PanelSeT SFN, Spacial SF, Spacial SM, for electrical enclosure D400mm, set of 2, H100mm



## Main

Range	Spacial
Accessory / separate part category	Enclosure accessory
Product or component type	Plinth side panel
Application	Multi-purpose
Nominal dimensions of the housing	-
Device composition	Fixing elements 4 corner cover 2 side panel
Range compatibility	Spacial Spacial SF Spacial Spacial SM
Mounting support	Front plinth

## Complementary

Fixing mode	By screws
Colour	Grey (RAL 7022)
Surface finish	Epoxy-polyester powder
Height	100 mm
Width	400 mm nominal:

## Environment

IP degree of protection	IP20 (complete plinth)
IK degree of protection	IK10

## Packing Units

Unit Type of Package 1	PCE
Number of Units in Package 1	1
Package 1 Height	6.000 cm
Package 1 Width	11.500 cm
Package 1 Length	25.500 cm
Package 1 Weight	1.065 kg
Unit Type of Package 2	S03
Number of Units in Package 2	12
Package 2 Height	30.000 cm
Package 2 Width	30.000 cm
Package 2 Length	40.000 cm
Package 2 Weight	13.200 kg
Unit Type of Package 3	P12
Number of Units in Package 3	96
Package 3 Height	45.000 cm
Package 3 Width	80.000 cm
Package 3 Length	120.000 cm
Package 3 Weight	117.600 kg

## Offer Sustainability

Sustainable offer status	Green Premium product
REACH Regulation	<a href="#">REACH Declaration</a>
EU RoHS Directive	Pro-active compliance (Product out of EU RoHS legal scope)
Mercury free	Yes
China RoHS Regulation	<a href="#">China RoHS Declaration</a>
RoHS exemption information	<a href="#">Yes</a>
Environmental Disclosure	<a href="#">Product Environmental Profile</a>
Circularity Profile	No need of specific recycling operations

## Contractual warranty

Warranty	18 months
----------	-----------